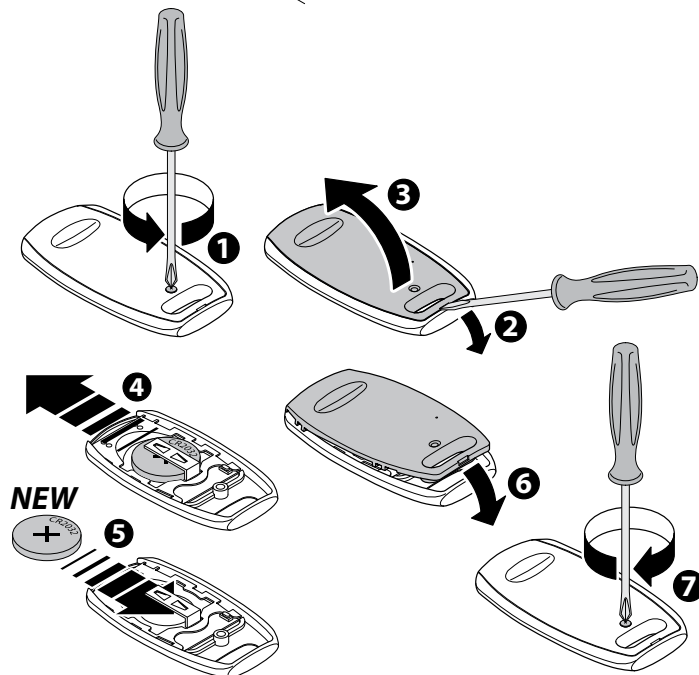
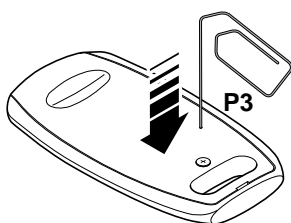
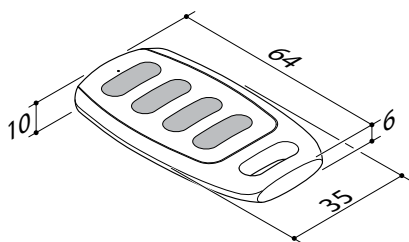


RC2

RC4



DESCRIPTION OF THE PRODUCT

UHF band transmitter with PPL controlled carrier frequency. This type of transmitter is used for controlling devices for domestic use, automatic openings, ON-OFF light control, dimming, etc. This appliance transmits a rolling code type signal to guarantee maximum security. The transmitter code can be stored in the receiver directly via the latter or via radio from the transmitter. With the second possibility you can add new transmitters to an existing system without having to touch the receiver. This can be done directly by the end user (the installer's help is not required). The code is stored in the receiver's EEPROM memory that retains it even if power is cut temporarily.

SAFETY RULES

- Keep this manual transmitter out of the reach of children and animals.
- Do not use the manual transmitter in places or where systems are sensitive to radio emissions (e.g. airports, hospitals).
- Do not keep or use the manual transmitter in places that are damp, where there is steam, high air humidity, dust or where it is exposed to the direct rays of the sun or similar environmental conditions.
- Do not drop the manual transmitter, it could be damaged, or its range of action reduced.

USE

- The operator is in no way protected against interference from other telecommunication equipment or systems (e.g. authorized radio systems working on the same frequency range).
- If you are having problems with its range of action, fix the manual transmitter up high (under the sunshade in a car for instance). Change the battery if necessary.
- Do not use your nails to press the key as they could damage the keys.

CHANGING THE BATTERY

- 1 - Remove the screw on the back.
- 2,3 - Open the lid.
- 4,5 - Take the old batteries out and put the new ones in the same way. Pay attention to correct polarity (+/-)!
- 6,7 - Close the transmitter with the screw.

- Keep the batteries out of the reach of children. Call a doctor immediately if a battery is swallowed.
- Explosion hazard if the battery is substituted incorrectly.
- Replace the battery with a CR 2032 type battery only.
- Always wrap the battery up, both when it is being stored and when it is being disposed of. The battery should not come into contact with other metal objects as it could cause the battery to run down, catch fire or be damaged.
- Dispose of damaged or finished batteries immediately in compliance with the law. To this end, contact the authorities for safeguarding the environment or the center for disposing of waste materials in your area. Do not throw the battery away with household rubbish.

GUARANTEE

The guarantee complies with the law. If the guarantee must be used please refer to the specialized retailer. The right to the guarantee is applicable only for the country in which the manual transmitter was purchased. The batteries are not covered by the guarantee.

HOW TO STORE A TRANSMITTER VIA RADIO WITHOUT ACCESSING THE RECEIVER BY MEANS OF A PREVIOUSLY STORED TRANSMITTER

- Press the internal key P3 of a previously stored transmitter, the enabled receiver emits a continuous sound for 5 seconds.
- Transmit a channel present in the memory of the receiver, in which the new codes to be memorized, within 5 seconds and the buzzer will interrupt the sound for 1 sec, and then carry on for another 5 seconds.
- Transmit the new channel to store within 5 seconds, confirmed by intermittent buzzing.

DECLARATION OF CONFORMITY

The manufacturer declares that the type of radio equipment is compliant with Directive 2014/53/EU.

TECHNICAL DATA

The transmitters are coded directly by the manufacturer with a different code for each transmitter.

Technical specifications:

- Power supply:** 3V ± 10% (Lithium Battery CR2032)
- Consumption when transmitting:** 12 mA
- Working temperature:** -10°C...+55°C
- Carrier frequency:** 868.3 MHz
- ERP:** 0 dBm